

NUCTECH™ XT2080

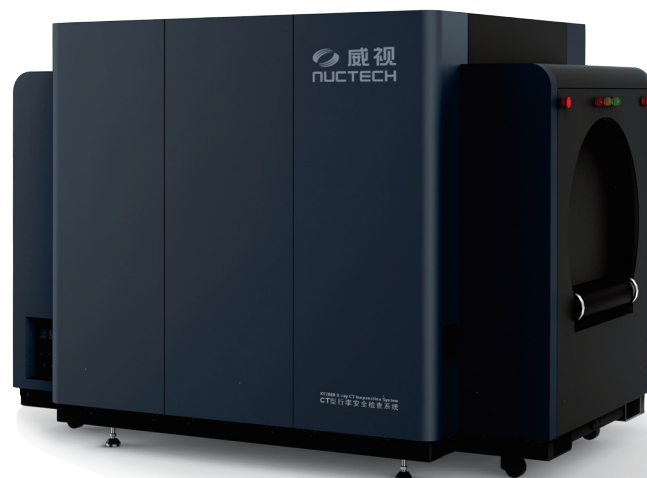
X-ray CT Inspection System



Introduction

NUCTECH™ XT2080 is a newly developed CT (Computed Tomography) inspection system developed by NUCTECH COMPANY LIMITED. The system innovatively combines NUCTECH's dual-energy material discrimination technology with the spiral CT technology together. With multidimensional information acquired by the system, it realizes automated explosives/liquid explosives/ narcotics detection and alarm with higher probability of detection and lower false alarm rate.

Designed with a larger tunnel size and a higher throughput, the XT2080 is an ideal security solution for airports, customs, stations, governmental buildings, public activities, etc.



EN

WWW.NUCTECH.COM

Technical Features

• Broadest Inspection Range

XT2080 is capable of automated detection various contraband like explosives, liquid explosives and narcotics, satisfying security needs for airports, customs, governments and so forth.

• Exclusive Dual-Energy Material Discrimination Technology

Discriminating different materials by utilizing the information acquired with higher probability of detection and lower false alarm rate. XT2080 has achieved CAAC certification and the ECAC for EDS standard 3. It has also achieved the ECAC for LEDS Type D/D+ standard 2.

• Distinct CT Slice Images

It is easier to detect the contraband concealed in interlayers or placed in a particular angle.

• Independent Dual-Energy Inspection System

XT2080 generates high-resolution DR images with more abundant image details, which can identify tiny thin objects like matches and lighter cores.

• Powerful Network Management

As a result of the network management, XT2080 not only realizes remote resolutions, remote operations, remote diagnoses, remote management and so forth, but it can also share the original and processed data between different areas with cloud computing technology.

• Convenient Maintenance Design

The modular design enables the easy replacement of key components and convenient maintenance, reducing time and labor.



Technical Data

General Specifications

Tunnel Dimensions	800mm tunnel diameter
Max. Baggage Size	1800mm(L)×650mm(W)×450mm(H)
Conveyor Height	710mm
Conveyor Load	200kg(even distributed)
Throughput	720 BPH
Wire Resolution	40 AWG
DR Steel Penetration	40mm
CT pixel resolution	2mm line pair
Display Monitor	Color monitor / High resolution of 1920×1080

X-ray Generator

Anode Voltage	160kV
Cooling / Duty Cycle	Sealed oil bath / 100%

Image Processing System

Image Processing	Color/BW, Negative, Edge enhancement, General enhancement, Organic stripping, Inorganic stripping, High-energy Penetration, Pseudo-color, etc.
ROI% Zoom	Selectable image zoom regions, 1 ~ 64 times enlargement
Data Storage Capacity	Over 50,000 images

Health and Safety

X-ray Leakage	Conform to all the radiation protection standards recommended by IAEA, ICRP and WHO
---------------	---

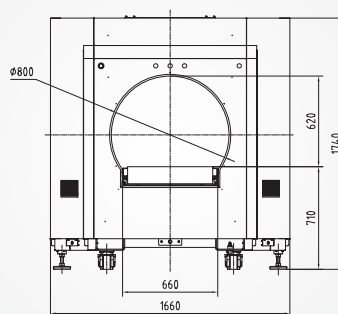
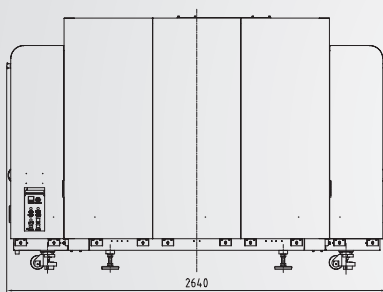
System Functions

Date/Time display, Luggage counter, User management, System-on timers, Power-on self-test, Image Storage and query, Built-in diagnosis.

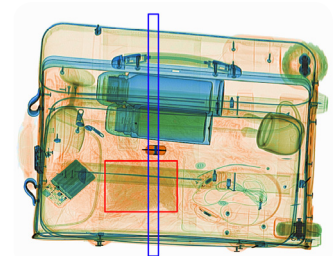
Installation Data

Dimensions / Weight	2640mm(L)×1660mm(W)×1740mm(H) / 2400kg
Operating Temperature / Humidity	0°C ~ +40°C / 5% ~ 95%(non-condensing)
Storage Temperature / Humidity	-40°C ~ +60°C / 5% ~ 95%(non-condensing)
Power Supply	Single phase, 220VAC/110VAC(-15% ~ 10%), 50Hz/60Hz±3Hz
Power Consumption	3.2kVA

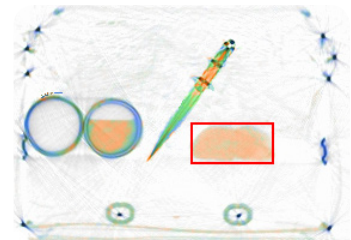
Note : DR Image performance specifications above are based on the tester complying with GB15208.2-2006.



SCTMD/TP-A021503-EN



DR Image



CT Slice Image

NUCTECH COMPANY LIMITED

Address: 2/F Block A, Tongfang Building,
Shuangqinglu, Haidian District,
Beijing 100084, P.R.China
Tel: +8610 62780909
Fax: +8610 62788896
Http: //www.nuctech.com

NUCTECH HONG KONG COMPANY LIMITED

Address: Rooms 1403-04 on the 14th
Floor of China Resources Building,
No.26 Harbour Road, Wanchai,
Hong Kong
Tel: +852-27221828
Fax: +852-27221849

NUCTECH SYDNEY PTY LTD.

Address: Suite 404, 77 Dunning Avenue,
Rosebery NSW 2018 Australia
Tel: +612 96622307/96622317
Fax: +612 96622371

NUCTECH WARSAW COMPANY LIMITED SP. Z O. O.

Address: ul. Pandy 18,
02-202 Warsaw Poland
Tel: +48 22 6591545
Fax: +48 22 6581483

NUCTECH COMPANY LTD SUC. ARGENTINA

Address: ECHEVERRIA 1515,
6A, BELGRANO, CABA,
CP1428, ARGENTINA
Tel: 0054-11-4782 2486
Fax: 0054-11-4785 0726-108

NUCTECH COMPANY LIMITED (VENEZUELA BRANCH)

Address: Av. San Juan Bosco, Entre 2da y 3ra
Transversal, Centro Altamira, Piso 14,
Ofc."C", Caracas, Venezuela
Mobile: +58412 321 7001
Tel: +58212 261 1050/261 9074
Fax: +58212 261 0618

Copyright© 2015 NUCTECH COMPANY LIMITED, All Rights reserved.
Design and specifications are subject to change without notice.
Printed in CHINA, December 2015.



NUCTECH HAS BEEN AWARDED THE CERTIFICATE OF QUALITY MANAGEMENT SYSTEM (ISO9001:2008)
NUCTECH HAS BEEN AWARDED THE CERTIFICATE OF ENVIRONMENTAL MANAGEMENT SYSTEM (ISO14001:2004)
NUCTECH HAS BEEN AWARDED THE CERTIFICATE OF OCCUPATIONAL HEALTH AND SAFETY MANAGEMENT
SYSTEM(GB/T28001-2011)

