

## HT2100TV

Inspection on and inside the body  
High quality real time torso images  
Widely used in a variety of applications

### **Non-contact torso inspection**

No special motion required; focus on threats hidden in the body with one scan.

### **Superior inspection capability**

Easily detects contrabands concealed under clothing, swallowed or concealed in body cavities: including metallic and non-metallic weapons, explosives, drugs, smuggled goods, mobile phones, jewelry, gems and precious metals.

### **Practical software**

Provides image processing, database management, user management and training functions; LAN and WAN compatible enabling remote inspection, portable monitor and centralized management.

### **High quality images with threats assesment software**

Provides high resolution and real time torso view images. Automatic threat assessment function is able to highlight areas with liquid and solid narcotics

### **Radiation safety**

Dose level complies with the IAEA and ANSI N43.17 standards.

### **Convenient maintenance**

Modular design provides easy installation and maintenance.

### **Widely used in a variety of applications**

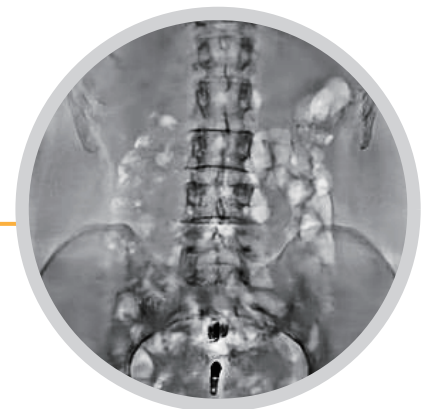
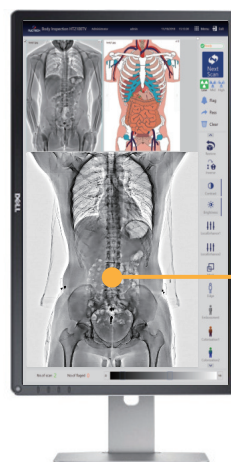
Can be used in correctional facilities, law enforcement, border crossings, special events, etc.



## Inspection Items

	Explosives		Drugs
	Weapons		Narcotic powder
	Handcuffs		Mobile phones
	Tools		Batteries
	Ceramic knives		Precious metal

## Scan Image



## Dose Comparison

1

1 inspection  $\approx$  1 hour natural background

20

20 inspections  $\approx$  1 hour flight

400

400 inspections  $\approx$  1 Chest X-ray

## Technical Specifications

General Specification	
Inspection mode	Non-contact
Scan time	$\leq 7s$
Spatial resolution	$\Phi 1.0$ mm line pairs
Wire detectability	38 AWG
Radiation dose for single inspection	0.25 ~ 5.0 $\mu Sv$ (adjustable)
Detection capabilities	Metal/non-metal weapons, explosives, drugs, liquids, etc.

Imaging Processing System	
Standard operator number	1
Image acquisition mode	Real time
Image processing functions	Zoom & move, contrast & brightness adjustment, mark, enhancement, inverse, etc.
Image retrieval	Retrieve scanned images, track inmate cumulative dose.

Installation Data	
System dimensions	1897 mm(H) x 2116 mm(W) x 2208 mm(D)
Tunnel dimensions	2100 mm(H) x 750 mm(W)
Weight	690 Kg
Power supply	100 ~ 120VAC / 200 ~ 240VAC, 50/60Hz
Power consumption	1.2 KVA
Operating temperature/Humidity	0 $^{\circ}C$ ~ + 40 $^{\circ}C$ / 0% ~ 93% (non-condensing)
Storage temperature/Humidity	-20 $^{\circ}C$ ~ + 60 $^{\circ}C$ / 0% ~ 93% (non-condensing)

Advanced Function	
Optional features	Touchscreen, video surveillance, barcode scanner, remote control & management, safety railing & platform, dosimeter, fingerprint reader, etc.

## Dimensions

